

Grade 1 Collection

GRADE 1

SEATING
FABRIC



TRADITION LATTE



INFINITY BARLEY



*HUE FROTTE



SOY



SPROUT



DOVE



MAIZE



LATTE



TROPIC



MILLER



ASH



RADIANT



PAPAYA



SKY



GRASS



PEEL



STERLING



CAPRI



BEYOND



NIGHT



*INDIGO



WASH



CLASS



SABLE



UMBER



CHIPOTLE



GRAPE



MALBEC



BRANCH



BERRY



HYACINTH



*COCOA



*JUNIPER



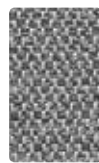
WELD



HIDDEN



ECLIPSE



PEWTER



*CHAR



*BLACK

BodyBit®




GRADE
1

TRADITION
INFINITY
HUE

GRADE 1

SEATING FABRIC

TECHNICAL INFORMATION

Width - Pattern	Fiber Content & Backing	Finish	Abrasion (D.R.)	Light-fastness	Cleaning Code
54" HUE 	100% Post Industrial Recycled Polyester Latex Backing	Teflon*	1,000,000	60 Hrs. Class 4.5	WS
57" INFINITY 	74% Post Consumer Recycled Polyester, 26% Polyester Acrylic Backing	Soil & Stain Resistant	200,000	40 Hrs. Class 4	WS
56" TRADITION 	72% Post Consumer Recycled Polyester, 28% Polyester Acrylic Backing	Soil & Stain Resistant	200,000	40 Hrs. Class 4	WS

ACT Registered Certification Marks
Patterns meet CA Bulletin 117-2013.
Primary Application: Upholstery Seating.

EXPLANATION OF ACT ICONS FOR UPHOLSTERY

FIRE RETARDANCY

Flammability testing determined as fabric's resistance to burning.



PASSES
California 117

COLORFASTNESS TO WET & DRY CROCKING

Colorfastness to wet & dry crocking refers to the rubbing off of color from the fabric onto clothing, hands or other materials and can occur under wet or dry conditions.



PASSES
AATCC 8-1974 Dry Crocking, Class 4 minimum;
Wet Crocking, Class 3 minimum

COLORFASTNESS TO LIGHT

Colorfastness to light is the degree to which fabric will retain its color when exposed to light.



PASSES
AATCC 16A-1974 or AATCC 16E-1976 Class 4 minimum at 40 hours
NOTE: Class 4 minimum at 60 hours is recommended for direct sunlight exposure situations

PHYSICAL PROPERTIES

3 physical property tests include: brush pill test to determine a fabric's pilling. Breaking/tensile strength is the ability of a fabric to withstand tension without breaking or tearing. Seam slippage is the pulling apart of fabrics at the seams.



PASSES
Brush Pill ASTM D3511, 3-4 minimum
Breaking Strength ASTM D3597-D1682-64 (1975)
50 lbs. minimum in warp & weft
Seam Slippage ASTM D3597-D434-75 25 lbs. minimum in warp & weft

ABRASION

Abrasion is the ability of a fabric to withstand damage from wear and rubbing. There is a general contract specification as well as a heavy duty specification.



General Contract

PASSES
ASTM 3597 modified (#10 cotton duck);
15,000 double rubs Wyzenbeek Method



Heavy Duty

PASSES
ASTM 3597 modified (#10 cotton duck);
30,000 double rubs Wyzenbeek Method
or ASTM D4966 (with 21 oz. weight);
40,000 rubs Martindale Method

CLEANING CODE DEFINITIONS

W: Water-based cleaning agents or foam may be used.

WS: Clean with water-based cleaning agents, foam or pure, water-free solvents (Energine, Carbona, Renuzit or other similar products). Vacuuming or light brushing is recommended to prevent dust and soil buildup.

BodyBilt

ErgoGenesis, LLC

One BodyBilt Place

Navasota, TX 77868

USA

tel: 800.364.5299

tel: 936.825.1700

fax: 936.825.1725

REDUCED ENVIRONMENTAL IMPACT



www.BodyBilt.com

For more information, contact us at
Customer-Service@BodyBilt.com.com

ergoGENESIS