



AIRCELLI

A cloud of corporate comfort, the Aircelli is the ultimate evidence that style and seating satisfaction can blend seamlessly. Form and function flow through its striking semblance. The chair's super-soft mesh and cutting-edge air cell lumbar are incredible office chair composition innovations. And combined with BodyBilt's ergonomically-contoured seat, it creates an unequaled experience.



HEALTHCARE



LABORATORY



OFFICE



HOME



COMFORT & ADJUSTABILITY

UNMATCHED MESH

Multidirectional elastomeric mesh alternates support and freedom, providing maximum comfort.

ADJUSTABLE ARMS

Soft 6-way adjustable arms. Adjust in height, angle, and width.

MODERN BASE

Five star stylish, durable base boosts 2.5" casters for effortless movement



Color Options

Carbon | Patriot | Steel

SEAT OPTIONS

Seat available in flat, moderately contoured, stretch and petite.

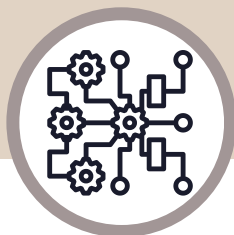
A MECHANISM

A mechanism features a gear ratio that allows the chair to achieve an ideal seated posture between seat and back, maintaining core support, even while reclining.

SPECIFICATIONS

Backrest Width, Shoulder Region	19.50"
Backrest Width, Lumbar Region	16.00"
Backrest Height	28.00"
Backrest Height Adjustment	2.50"
Lumbar Height Adjustment	2.50"
Seat Width	21.00"
Seat Depth	19.00"
Seat Depth Adjustment	2.50"
Seat Height (range)	17.00" - 21.50"
Armrest Height Adjustment	4.50"
Arm Pad Length	10.00"
Arm Pad Width	4.50"
Base Diameter	26.00"
Weight Capacity	300 lbs.

WHAT DO YOU GET WITH BODYBILT?



TECHNOLOGY

Always innovative, BodyBilt is constantly incorporating technologies from other industries to maximize performance and comfort.



ERGONOMICS

From contoured seats reducing seated pressure to a multitude of adjustments in every main component, our chairs mold to your body, ensuring you're ergonomically supported at every angle.



DURABILITY

Built to last, our chairs are constructed with quality, resistant materials. Ensures you a lasting experience of healthy and comfortable seating for many years to come.