

# Grade 4 Collection

GRADE 4

SEATING  
FABRIC

## Ultratech™ | Cove



593-2599 Marine



593-5247 Sun Flower



593-1327 Cherry Red



593-9313 Lychee



593-4423 Emerald



593-2619 Capital Blue



593-5970 Soft White

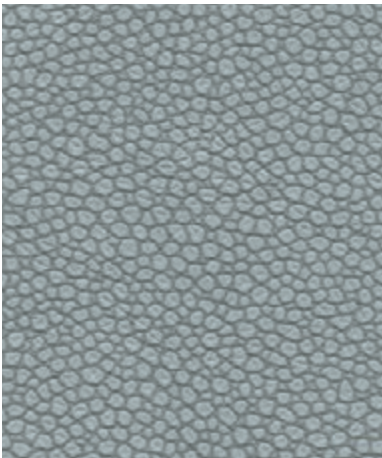


593-5972 Marlin



593-5943 Black Swan

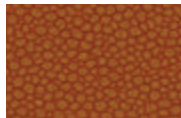
## Ultratech™ | Eco Tech



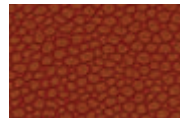
394-5757 Moonstone



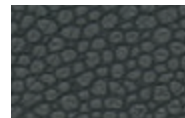
394-3622 Limestone



394-8202 Orange Tabby



394-1369 Burnt Clay



394-5777 Coal



394-4431 Gecko



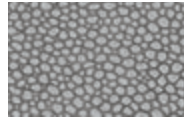
394-4531 Pacifica



394-2519 Toucan Blue



394-7243 Cadet



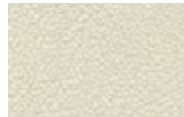
394-4408 Komodo

## Ultraleather® | Pro

EPA-registered antimicrobial protection • Ink and denim resistant



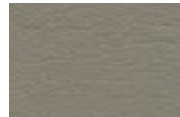
554-2522 Capri



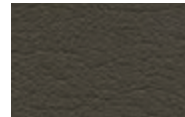
554-3803 Parfait



554-3352 Shore



554-3087 Woodcres



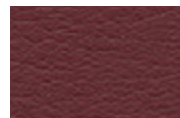
554-3376 Dark Chocolate



554-3444 Toasted Bagel



554-8229 Campfire



554-1357 Cranberry



554-9336 Aubergine



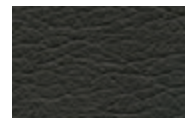
554-2711 Blueberry



554-5648 Cloud



554-5626 Char



554-5618 Dark Knight

# BodyBit®

GRADE  
4

Brisa®  
Ultraleather®  
Ultratech™  
Collections

## TECHNICAL INFORMATION

Pattern	Fiber Content	Abrasion (D.R.)	Light-fastness
Brisa <sup>®</sup>   Mokume	100% Polycarbonate Polyurethane, 65% Polyester, 35% Rayon Backing	300,000	200 Hrs. Grade 4-5
Brisa <sup>®</sup>   Original	100% Polycarbonate Polyurethane, 65% Polyester, 35% Rayon Backing	300,000	200 Hrs. Grade 4-5
Ultraleather <sup>®</sup>   Pro	100% Polycarbonate Polyurethane, 65% Polyester, 35% Rayon Backing	500,000	200 Hrs. Grade 4-5
Ultraleather <sup>®</sup>   Promessa	100% Polycarbonate Polyurethane, 65% Polyester, 35% Rayon Backing	400,000	200 Hrs. Grade 4-5
Ultratech <sup>™</sup>   Cove	100% Polycarbonate Polyurethane, 65% Polyester, 35% Rayon Backing	200,000	200 Hrs. Grade 4-5
Ultratech <sup>™</sup>   Eco Tech	100% Polycarbonate Polyurethane, 82% Rayon, 18% Polyester Backing	100,000	200 Hrs. Grade 4-5

Patterns meet CA Bulletin 117-2013.  
Primary Application: Upholstery Seating.

### Cleaning & Care Instructions

- Wipe up spills as soon as they occur
- Clean with soap and water or alcohol based cleaners
- Sanitize using (1:5) bleach/water solution or other approved disinfectants
- For ink (Ultraleather<sup>®</sup> | Pro) and other stubborn stains, wipe off with isopropyl alcohol as soon as possible
- Thoroughly rinse all solution residue with clean water
- Air dry

### Earth Friendly

- **GREENGUARD Certified**
  - Meets stringent chemical emission limits including hazardous VOCs such as Formaldehyde
  - Promotes healthier indoor air quality
  - Contributes towards satisfying credits under LEED<sup>®</sup> and level<sup>®</sup>, BIFMA
- Compliant with Prop 65
- Less than 100 ppm of antimicrobial treatment<sup>†</sup>
- Bisphenol A (BPA)
- No Conflict Minerals
- No Flame Retardants (ex. Halogenated, Brominated)
- No Heavy Metal Stabilizers
- No PBDEs (Polybrominated Diphenyl Ethers)
- No Plasticizers Phthalates
- No POPs (Persistent Organic Pollutants)
- No PVC (Polyvinyl Chloride)
- No toxic by-products
- Over 99% of solvents recaptured and recycled

<sup>†</sup> Denotes Pro and Promessa

**BodyBilt<sup>®</sup>**

ErgoGenesis, LLC

One BodyBilt Place

Navasota, TX 77868

USA

tel: 800.364.5299

tel: 936.825.1700

fax: 936.825.1725

## Ultraleather® | Promessa®

EPA-registered antimicrobial protection



363-2695 Aquamarine



363-3463 Cocoa



363-3141 Fields



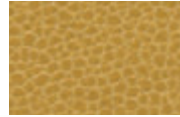
363-3145 Bronze



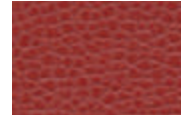
363-3391 Sparrow



363-4481 Scallion



363-5258 Sun Shower



363-1387 Dogwood



363-3037 Horsehair



363-7309 Malibu



363-5818 Ash



363-5011 Battleship



363-5845 Ebony

## Brisa® | Original

Acoustical properties • Breathable technology



533-1361 Beet Root



533-3946 New Sand



533-3233 Honeycomb



533-8202 Koi



533-1383 Pompeian Red



533-4487 Sage



533-4303 Seaweed



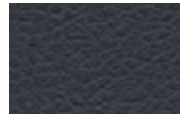
533-3022 Shiitake



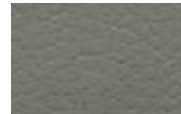
533-3913 Truffle



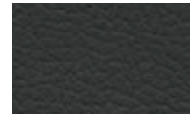
533-2645 Cambridge Blue



533-2683 Indigo



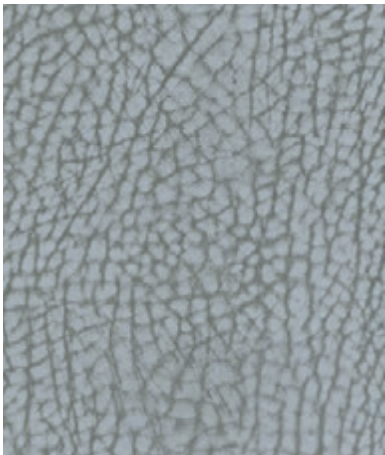
533-5802 Ash



533-5749 Black Onyx

## Brisa® | Mokume

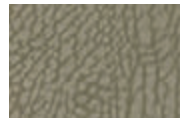
Acoustical properties • Breathable technology



556-5960 Sidewalk



556-3252 Tiki Hut



556-3255 Outback



556-3253 Wild West



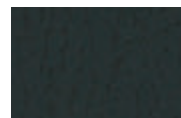
556-3401 Katalox



556-2583 Waterfall



556-2584 Starry Night



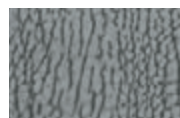
556-2586 Jungle



556-3402 Treehouse



556-2585 Ocean Air



556-5961 Concrete



556-5963 Grey Jay



556-5955 Jurassic